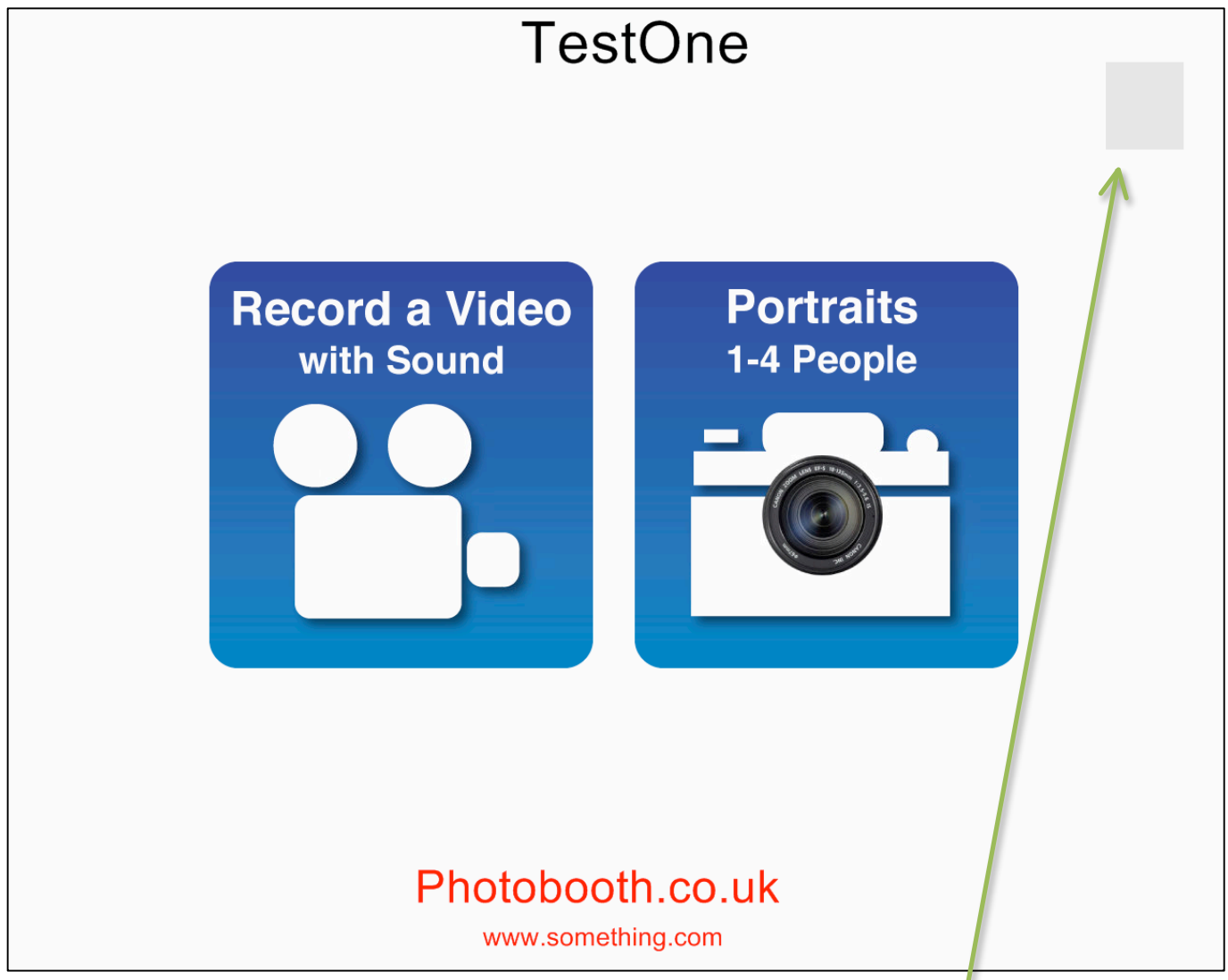


PB Pro Companion Guide

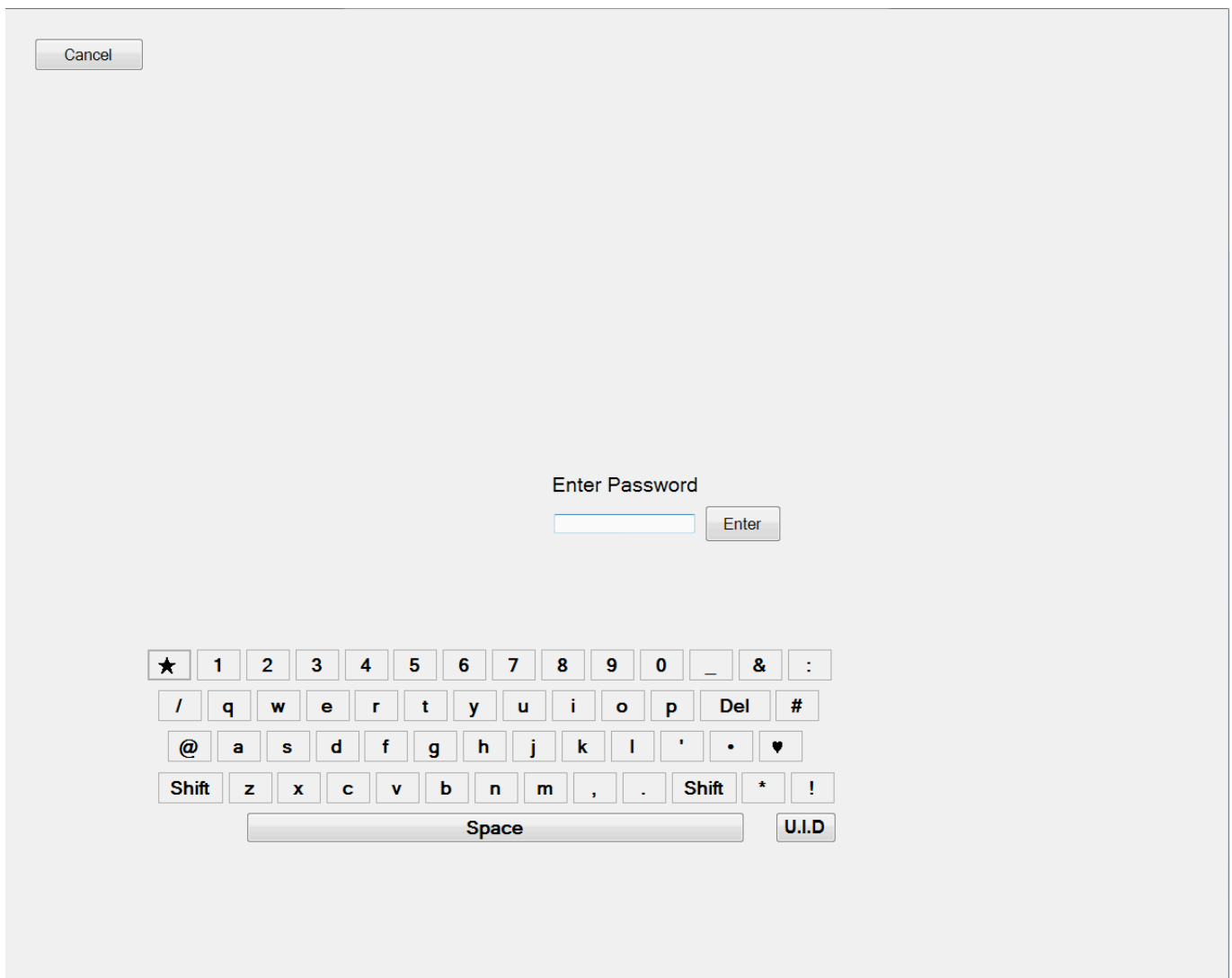
Opening Screen	3
Accessing the Admin Login.....	4
Initial Options in the Admin Section – Left hand Column	5
Admin Control	6
Event Tab.....	6
Event >> Control	6
Event >> Booking System Upload	6
Event >> Settings >> Business Facebook Uploads	6
Event >> Settings >> Web Site Upload	7
Event >> Settings >> Promotional.....	8
Event >> Settings >> Other	9
Template Tab	10
Template >> Multi Photo Layout.....	10
Layout >> Single Photo Layout.....	11
Layout >> Promotional	12
Booth Setup Tab.....	13
Booth Setup >> Language	13
Booth Setup >> Preview Windows	14
Booth Setup >> Functions and Appearance User Options, User Options 2, Other Art, Other Art options 2 15	
Booth Setup >> Functions and Appearance Shooting Options	16
Booth Setup >> Functions and Appearance PB Pro +	17
Booth Setup >> Functions and Appearance One Shot Options.....	17
Booth Setup >> Functions and Appearance Kiosk Background	17
Booth Setup >> Functions and Appearance Main Screen Layout.....	18
Green Screen	19
Camera Setup	20
About Tab	21
CoinOp	21
Admin Setup	23
Screen Config.....	24
Printer Config.....	25
Summary Tab	26
Setting Up the SLR Camera – Canon Range.....	27
The Resolution.....	27
Setting the Timeout.....	28
Setting Up the Flash	29
Auto Focus / Manual Focus.....	30
Updating Your Software.....	31

Opening Screen



On the Opening Screen (shown Above) if you **SHIFT + Click** on the area marked in Gray open up the Admin Panel.

Accessing the Admin Login



The image shows the Admin Login interface. At the top left is a 'Cancel' button. In the center, there is a label 'Enter Password' above a text input field and an 'Enter' button. Below the input field is an on-screen keyboard with the following layout:

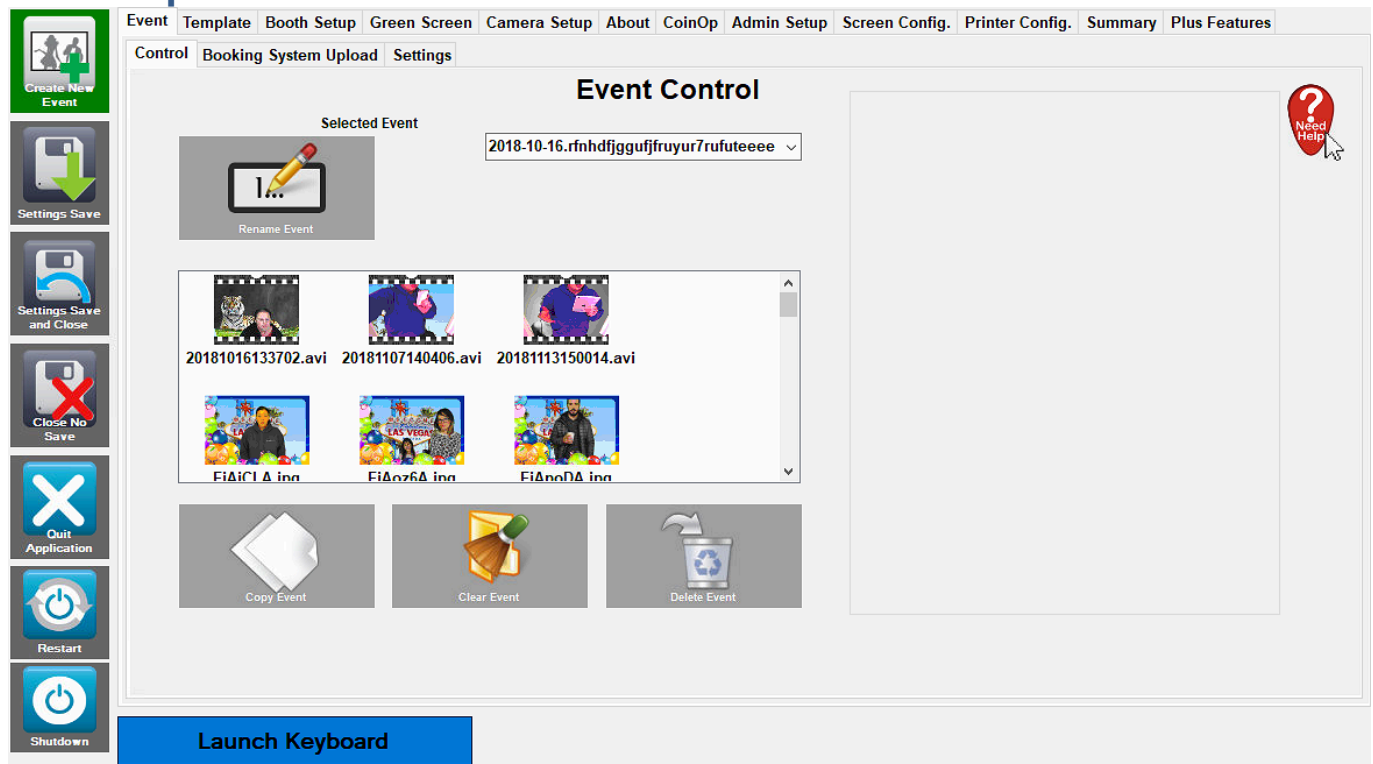
★	1	2	3	4	5	6	7	8	9	0	_	&	:
/	q	w	e	r	t	y	u	i	o	p	Del	#	
@	a	s	d	f	g	h	j	k	l	'	•	♥	
Shift	z	x	c	v	b	n	m	,	.	Shift	*	!	
Space												U.I.D	

Enter in the Admin password (for help with this email support@photobooths.co.uk)

This can be entered by using the On Screen Keyboard, or by using a physically connected keyboard to the computer.

If you have entered this by accident clicking the Cancel Button top left will return you to the PB Pro opening screen.

Initial Options in the Admin Section – Left hand Column



Create New Event – Setup for a new event.

Settings Save – Save all current Admin Settings (but stay in Admin)

Settings Save and Close – Save all current Admin Settings and Close the Admin

Close No Save – Close the Admin, don't save anything.

Quit Application – Quit's the PB Pro software back to the Desktop

Restart – Restart's the PC

Shutdown – Shut's the PC Down.

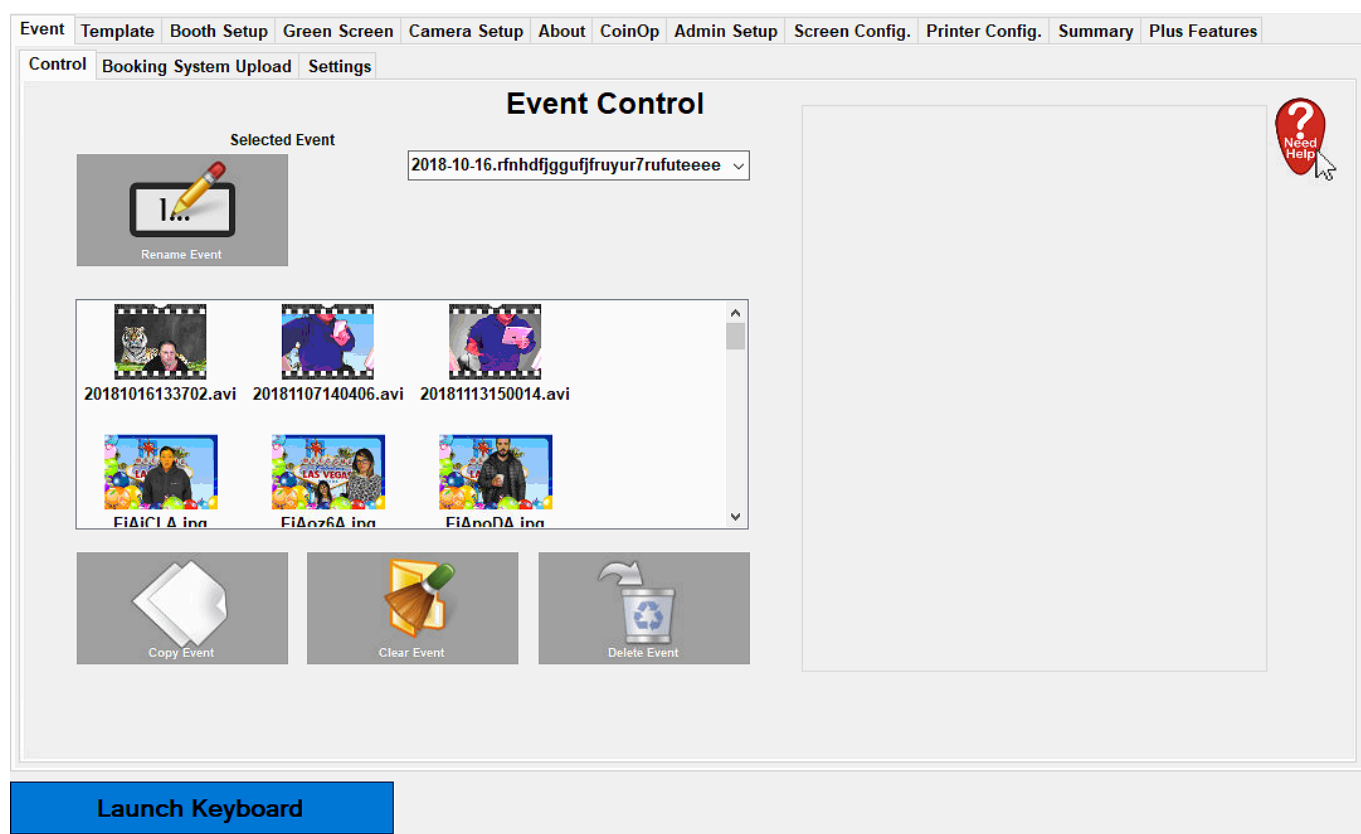
The Tabs across the top of the Admin Panel allows you to access certain areas.

We will go through each of these Tabs in Turn.

Admin Control

Event Tab

Event >> Control



The Event Control tab allows us to manipulate current events, copy clear and delete events where applicable.

By selecting an event in the drop down box you can view images (which will show in the white box). When viewing these images you can select the images and also Copy clear or delete an event.

Event >> Booking System Upload

The Booking System Upload Tab are now deprecated options and no longer in use.

Event >> Settings >> Business Facebook Uploads

The Facebook Business Uploads is now deprecated (ceased by Facebook) and is no longer in use.

Event >> Settings >> Web Site Upload

Event

Template

Booth Setup

Green Screen

Camera Setup

About

CoinOp

Admin Setup

Screen Config.

Printer Config.

Summary

Plus Features

Control

Booking System Upload

Settings

Business Facebook Uploads

Web Site Upload

Promotional

Other

☐ Enabled

An option to automatically upload pictures to your web server or to Photobooth.co.uk's free web server.

Use Photobooth's Free Website To Upload To

Enter your websites details or click default to select Photoboos free webserver.

Upload URL

http://www.photoinabooth.co.uk/uploaded.php?ser

Download URL

http://www.photoinabooth.co.uk/share/?uid=<serial>/<filename>

The Serial should be unique as it distinguishes your booth on the free Photoinabooth server

Serial

DefaultSerial

☐ A

Unique File Name Append Character

Need Help

Launch Keyboard

Website Upload allows you to upload your images to a web page for viewing. Please contact us for Website uploads to our or your own server*.

* Requires a hosting account and domain name.

Event >> Settings >> Promotional

Event

Template

Booth Setup

Green Screen

Camera Setup

About

CoinOp

Admin Setup

Screen Config.

Printer Config.

Summary

Plus Features

Control

Booking System Upload

Settings

Business Facebook Uploads

Web Site Upload

Promotional

Other

Attract Mode

Attract Mode Cycle RateSeconds 4

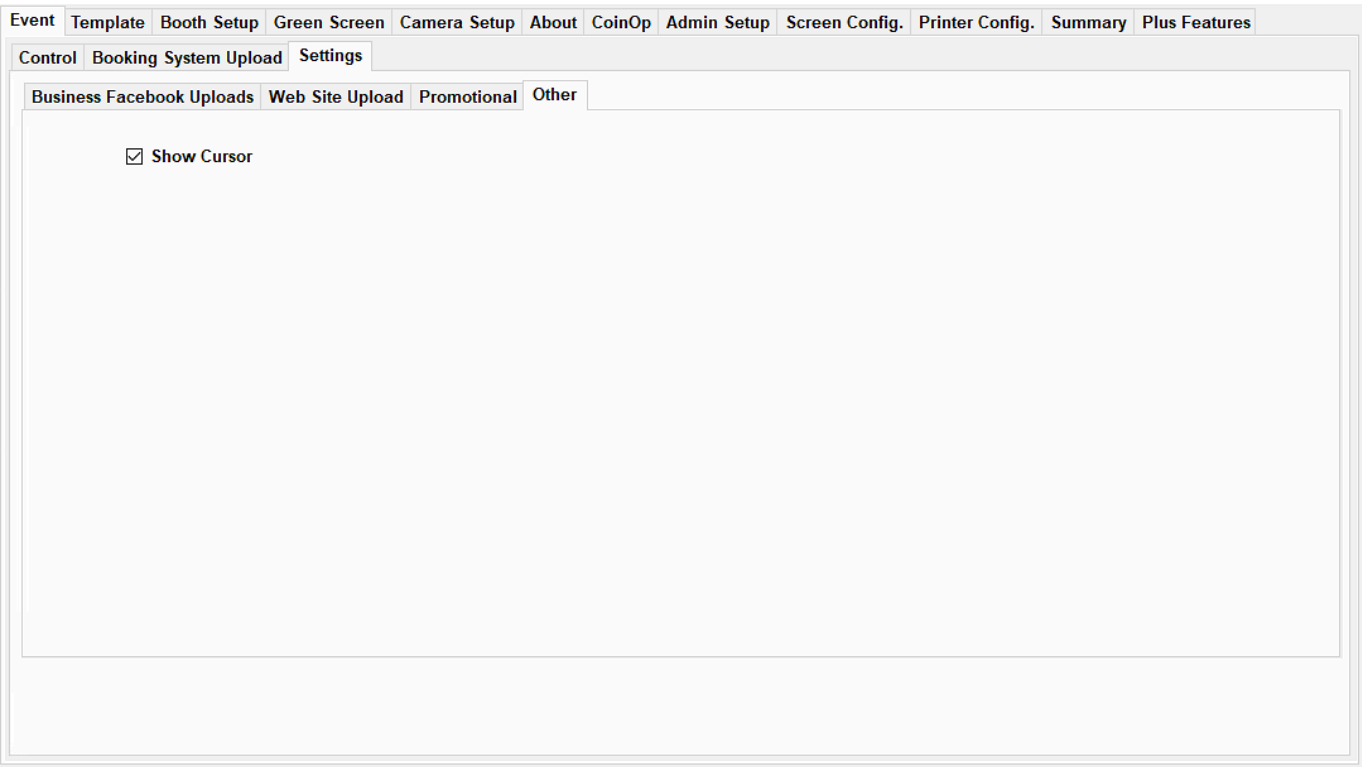
Adverts

?

Need Help

The Promotional Attract mode Cycle Rate is the speed at which the opening Graphics (when in Coin Op Mode) displays on refreshes on screen.

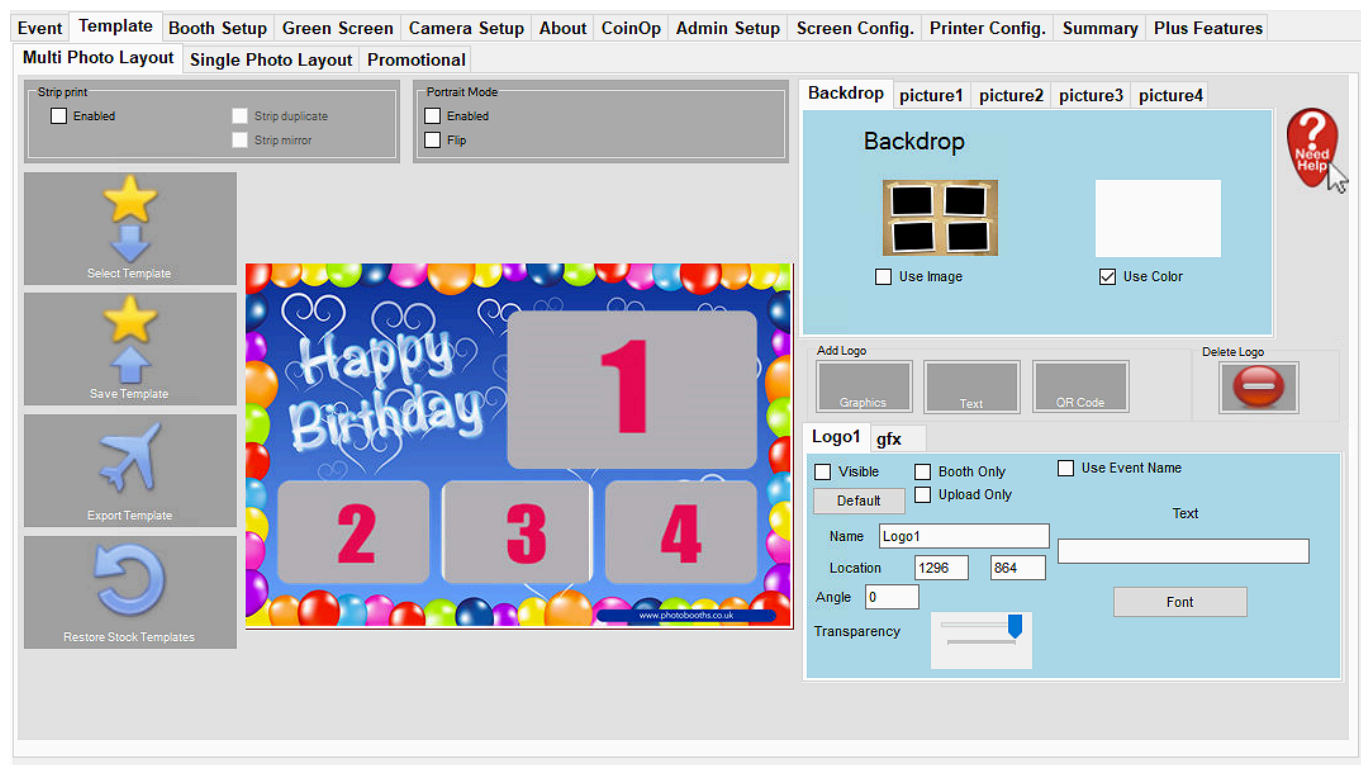
Event >> Settings >> Other



This simply allows you to hide or show the cursor on screen when using the Software with Touch Screens.

Template Tab

Template >> Multi Photo Layout



Using all the options on this page allows you to layout 4 Up images.

Backdrop – This will allow you to set a solid colour or use a Background Image.

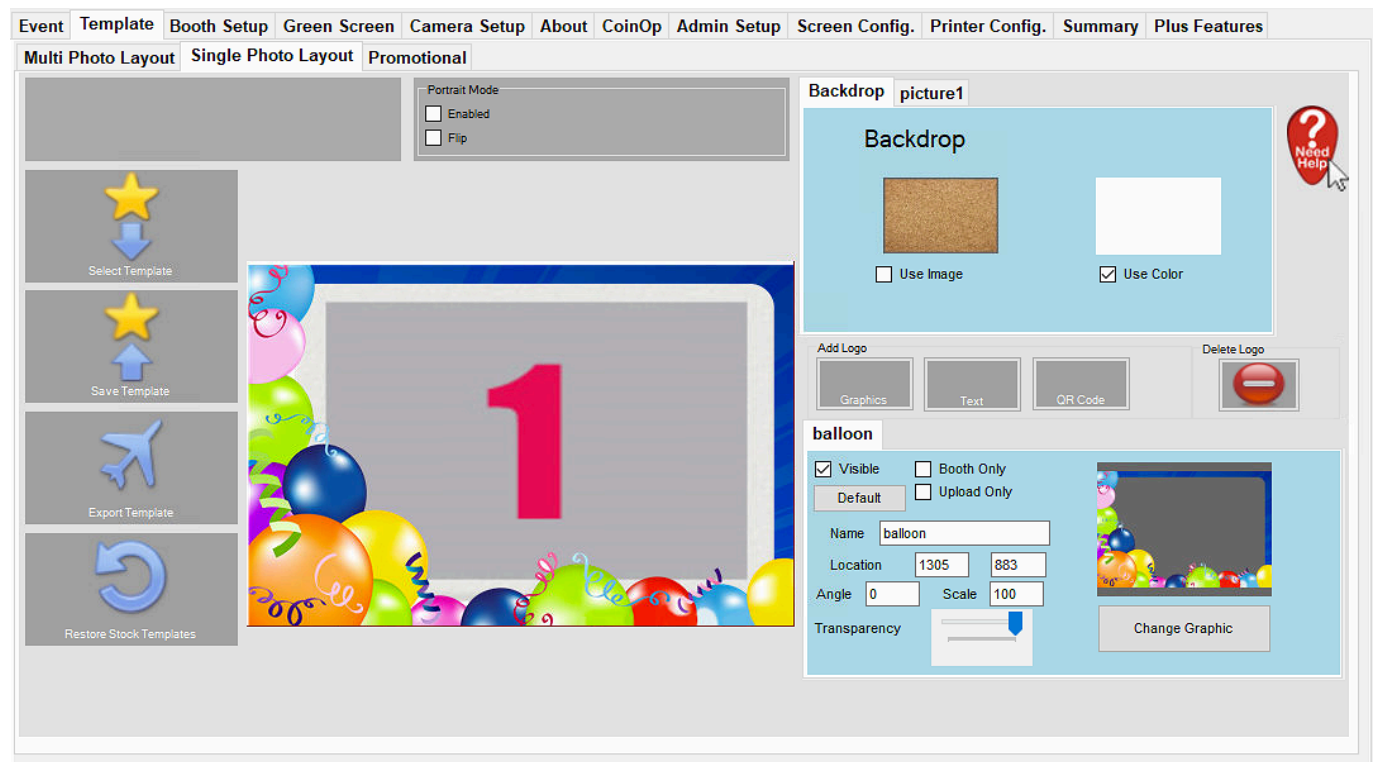
Picture1 – Alter and move the picture around on the live view and use the settings in this tab to finely tune your layout. This is the same for Picture2, 3 and 4. Additional options allow the pictures to be turned on, orientation, angle scale and transparency.

You can add a Logo of text, graphic or QR code by clicking the optional buttons. This will provide additional tabs below that can be individually setup for each item. Multiple logo's and text can be added to each layout.

You can also choose Strip printing options in the Strip print sub-window. This will require a printer to allow the strip printing and Printer settings will need to be set in the Printer Config. Tab.

After complete selecting Save Template will save this layout for future use (Select Template).

Layout >> Single Photo Layout



Similar in layout to the Multi Photo Layout you can add Logo's Text or QR codes, as well as altering the Background Image/Solid Colour and alter the aspect settings of the Single image (picture1).

After complete the layout can be saved (Save Template) and restored using Select Template.

Layout >> Promotional

Event

Template

Booth Setup

Green Screen

Camera Setup

About

CoinOp

Admin Setup

Screen Config.

Printer Config.

Summary


Plus Features

Multi Photo Layout

Single Photo Layout

Promotional

Flyer



Change Graphic

☐ Enabled
☐ Strip print

Quantity
One Per Print

Optimal Graphics Size 1800 x 1200

If your at a promotional event you can use this tab to print out an additional page as a promotional item.

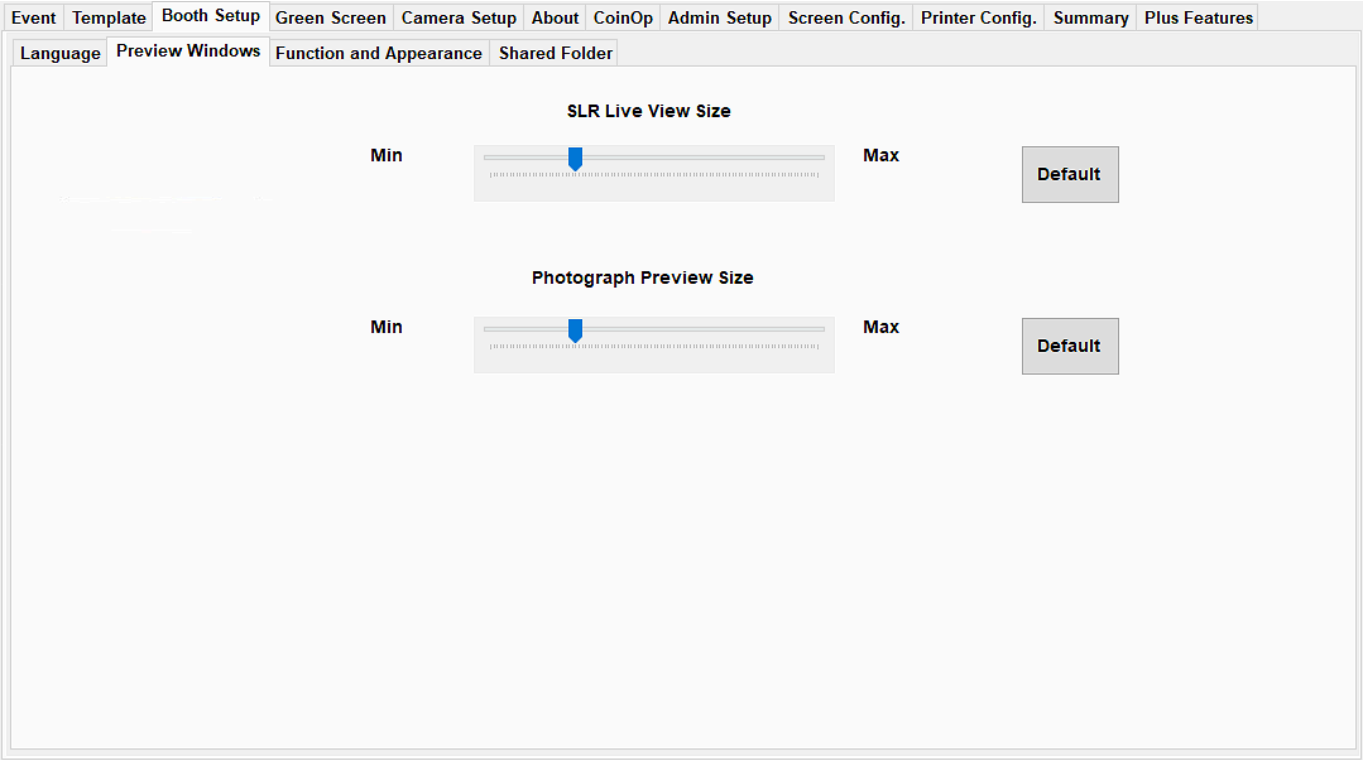
Booth Setup Tab

Booth Setup >> Language

Event	Template	Booth Setup	Green Screen	Camera Setup	About	CoinOp	Admin Setup	Screen Config.	Printer Config.	Summary	Plus Features
<div>Language</div> <div>Preview Windows</div> <div>Function and Appearance</div> <div>Shared Folder</div> <div><div>en-GB</div><div>English (United Kingdom)</div><div>en-GB English (United Kingdom)</div></div>											

To change the Software’s used language select from the drop down box. A restart may be required after saving from the admin before using the new language.

Booth Setup >> Preview Windows



Onscreen live previews and the final image preview can be altered in size to cater for different screen sizes and for performance (when run on a slower running processor).

Booth Setup >> Functions and Appearance


User Options, User Options 2, Other Art, Other Art options 2

Event	Template	Booth Setup	Green Screen	Camera Setup	About	CoinOp	Admin Setup	Screen Config.	Printer Config.	Summary	Plus Features
Language			Preview Windows		Function and Appearance		Shared Folder				
User Options		User Options 2	Shooting Options	Other Art Options	Other Art Options 2	PB Pro +	One Shot Options	Kiosk Background	Main Screen Layout		

Printing and Uploading User Options


☐ Automatic Print and Upload. Selected By De-Selecting Below Print and Upload Buttons

Print
☒ Enabled

PRINT PHOTO 


Change Graphic

Print and Email
☐ Enabled

PRINT & EMAIL 


Change Graphic

Print and Business Facebook
☐ Enabled

PRINT & UPLOAD 

Change Graphic

Print and Business Facebook QR Link
☐ Enabled



Change Graphic

Email
☐ Save Email Addresses in Event Folder

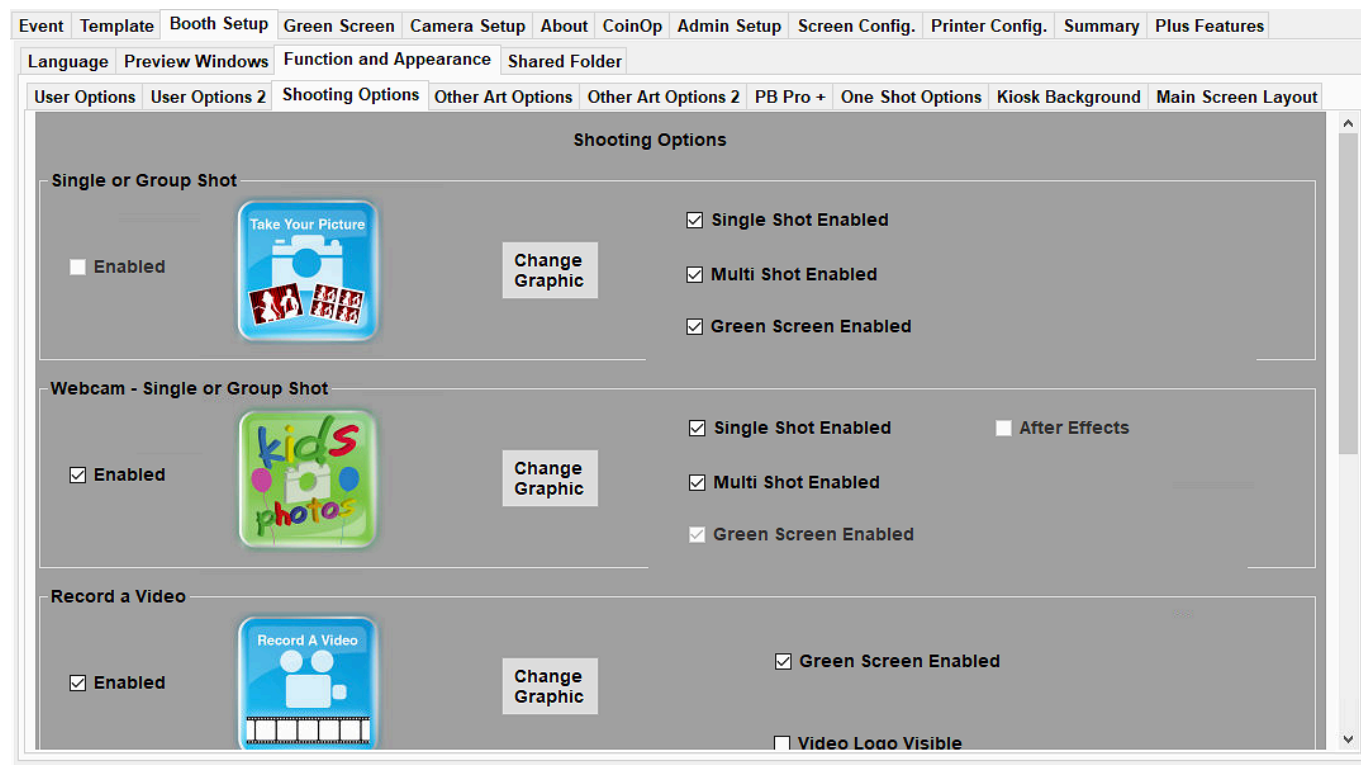
Facebook Message

Personal Facebook

Facebook Message

All used icons within the software can be altered within the User Options and User Options 2 tab's. As well as various personal preference options that can be turned on/off.

Booth Setup >> Functions and Appearance Shooting Options



This tab allows the public facing options to be altered in detail to cater for what type of event you have. In the screen shot above for example we see that Single or Multiple (Group Shot) options are selected for Sing, Multi shot and also enabling the green screen option. Also the webcam option is enabled again for single or multi shot.

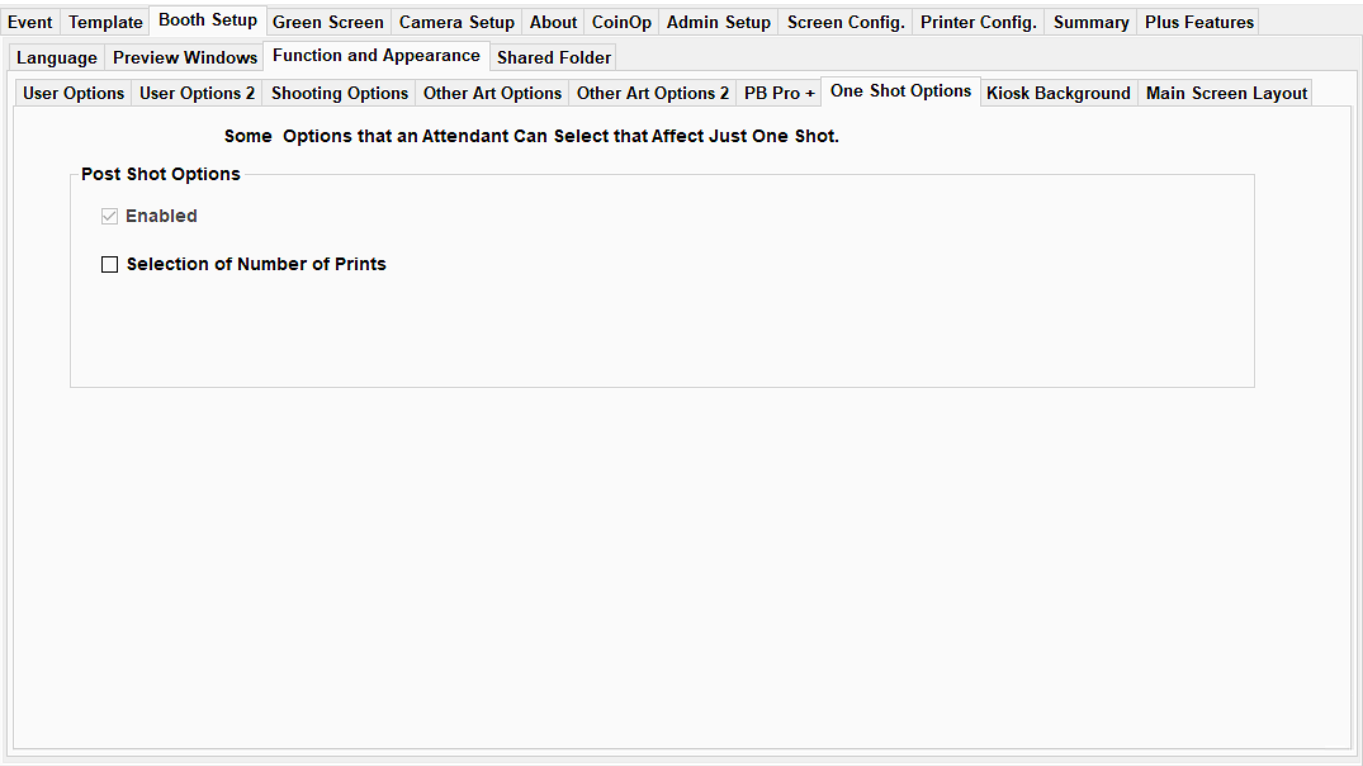
All the options in this tab are selected and enable/disable all public facing options as personal preference. It is worth experimenting with these options to get the desired effect.

Note: For new Booth setups it's worth keeping things as simple as possible before getting a few events out the way.

Booth Setup >> Functions and Appearance
PB Pro +

This options is currently in Alpha setting and is not currently supported.

Booth Setup >> Functions and Appearance
One Shot Options



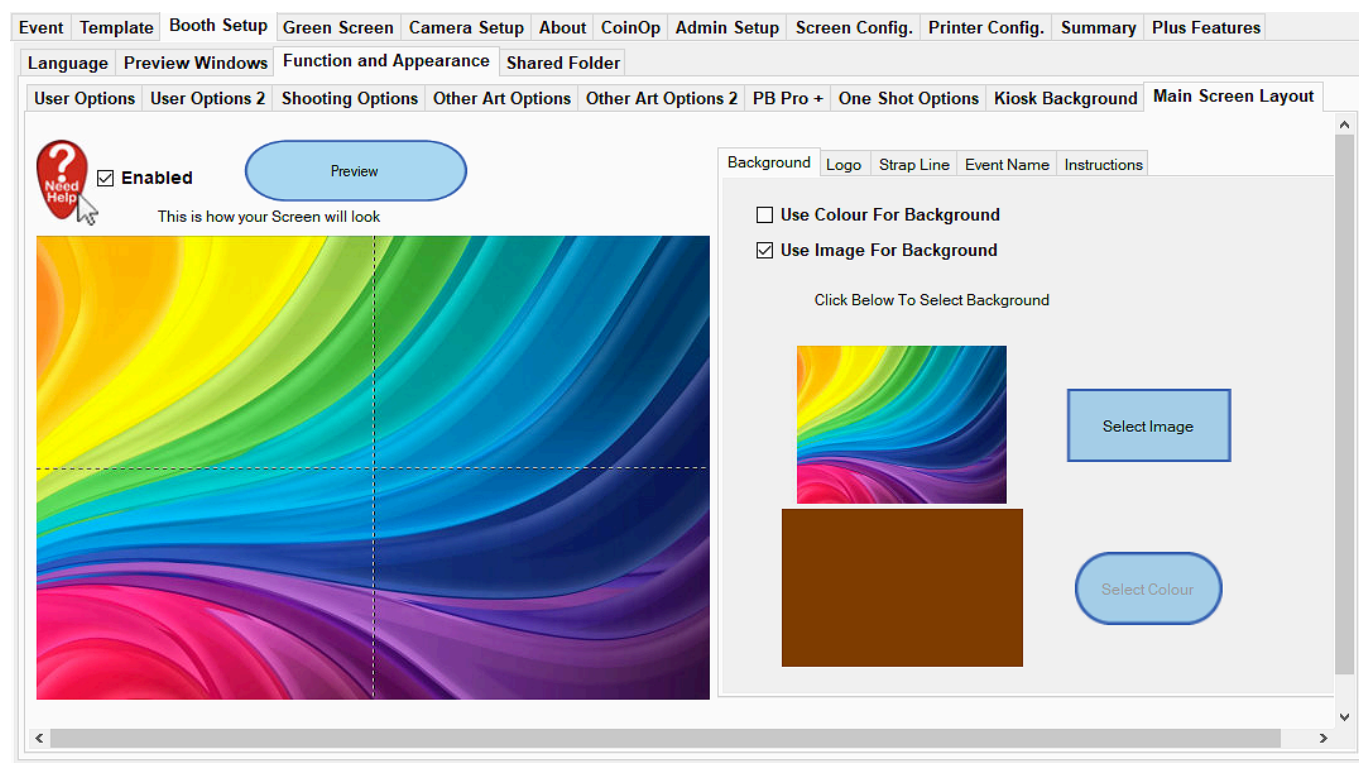
This option allows you to select the number of printers require for that particular shot (it doesn't keep the setting), this is useful if a group of people require a print each.

Booth Setup >> Functions and Appearance
Kiosk Background

Deprecated and replaced with Main Screen Layout.

Booth Setup >> Functions and Appearance

Main Screen Layout



The on screen layouts can be altered in numerous ways.

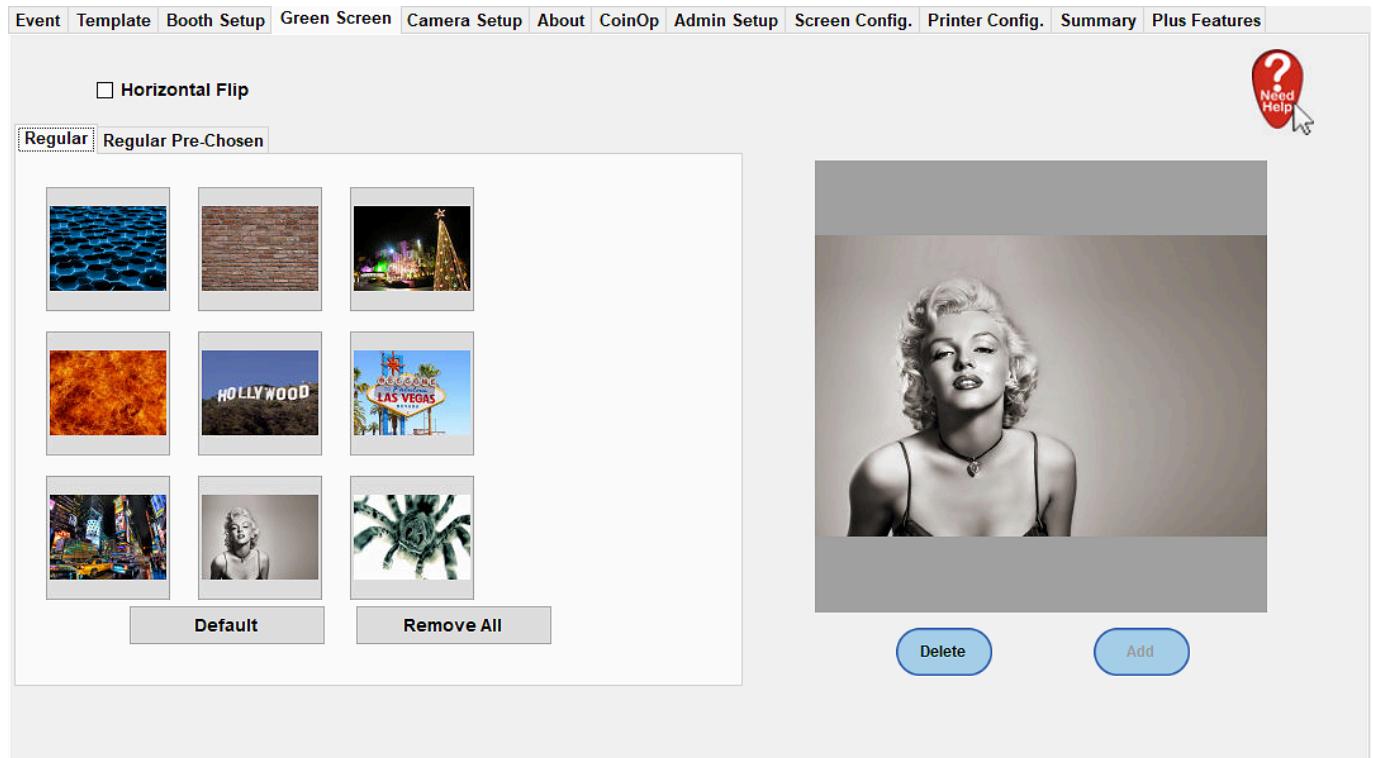
Utilising the options in this tab you can alter the Background, selecting an image or Solid colour, as well as add a Logo, Text Strap Line, Event Name and optional Instructions.

Clicking the Preview Button after altering the options will show the updated layout in the Preview Window.

Note: Make sure background images are kept to the size of the screen, choosing an overly large background image results in the image being scaled down, but will still use the full size so can take up a large amount of memory.

Background Images are best as JPEG images, try and keep the compression down to around 60% to keep sizes down.

Green Screen



Nine green screen options can be shown on screen for customers to choose as well as pre-chosen group sets.

To alter the Green Screen image options select the image in the left hand panel then choose Delete under the highlighted option.

Then to add an additional image select Add (Add will only be available if a slot is available for a green screen).

The the Pre-Chosen set select Add on follow the onscreen instructions to add in additional images. A green + icon top left of the window allows new images to be chosen.

The Horizontal Flip option allows you to flip all the images horizontally.

Camera Setup

The screenshot displays the 'Camera Setup' tab within a software interface. The top navigation bar includes tabs for Event, Template, Booth Setup, Green Screen, Camera Setup (selected), About, CoinOp, Admin Setup, Screen Config., Printer Config., Summary, and Plus Features. The interface is divided into two main sections: 'Stills' and 'Video'.

Stills Section:

- Stills Camera Settings:**
 - Camera:** A dropdown menu set to 'Canon' with a 'Settings' button next to it.
 - DSLR Orientation:** A dropdown menu set to 'Landscape'.
 - Webcam:** A dropdown menu set to 'Webcam Logitech_B910_HD_Webcam' with a 'Settings' button next to it.
 - ☐ Wait For User To Press Button Before Taking Each 4 UP Still
 - 8 F.P.S.**
 - Live View Max Frame Rate:** A slider set to '1.0 Seconds'.
 - Count Down Speed:** A slider.
 - Inactivity Exercise Interval:** A dropdown menu set to '25 Minutes'.
 - Event AllPhotographs Folder:**
 - ☐ Save All Photographs From Camera
 - ☐ With Green Screen Replacement If Required
 - Event PNGFolder:**
 - ☒ Save All Green Screen Photographs Also As PNGs

Video Section:

- Note:** Video Is always disabled In CoinOp mode
- Video Camera Settings:**
 - Frame Rate:** A dropdown menu set to '30'.
 - Frame Size:** A dropdown menu set to '720 x 480'.
 - Video Input:** A dropdown menu set to 'Logitech B910 HD Webcam'.
 - Sound Input:** A dropdown menu set to 'Microphone (B910 HD Webcam)'.
 - Video Codec:** A dropdown menu set to 'DV Video Encoder'.
 - Audio Codec:** A dropdown menu set to 'PCM'.

A red circular 'Need Help?' icon is located in the top right corner of the Video section.

Setting options for SLR camera and Webcam can be altered to suit on this page.

Select the Camera you require from the Canon Drop Down Menu. Then you can select the orientation.

Next select the Webcam from the drop down menu (for taking photos).

The other options are personal preference, you can alter the Live View Max Frame Rate to suit the power of the machine it is currently running on.

The Video options by default match the best results, but you can alter them also to suit your needs if required.

About Tab

Event

Template

Booth Setup

Green Screen

Camera Setup

About

CoinOp


Admin Setup

Screen Config.

Printer Config.

Summary

Plus Features



PBPro

Version1.9.1.26

@ 2013 2014 2015 Photobooth Labs Ltd


Software ID : 3433CE0KO

Registered - Paid For - Coin-Op - Green Screen - External Screen

Check For Updates!

Check For Updates

Install Updates



The About Section’s most important item is the version number, when on support we may ask you to go to the About Tab and let us know the Version number so it’s worth familiarizing yourself with where this is.

CoinOp

☐ Enabled

Booth Setup

Credits

£0.00

Photograph Price

£3.00

Reprint Price

£1.00

☒ Print Picture if "Try Again" Times Out

☒ Display Price

text

Price: £3.00

Font

☐ Apply 100x Factor to Notes

Change currency from Booth Setup -> Language

Restart Microcoin and SerialModule

Error Code
non
non

Microcoin

Choose A Background
Take A Photograph

Time Out Delays

15 Seconds

Try Again

20 Seconds

Next Photo

14 Seconds

Facebook Upload Time

30 Seconds

If CoinOp is fitted you can configure all the options in the CoinOp tab.
It's worth talking to Support when initially setting up the CoinOp.

Admin Setup

Event

Template

Booth Setup

Green Screen

Camera Setup

About

CoinOp

Admin Setup

Screen Config.

Printer Config.

Summary

Plus Features

Password

Old Password

New Password

Repeat New Password

Change Password

Notifications

☐ Enabled

Notification Details

Email

Enter email of a recipient of notifications.

☐ Coin-op Fatal Messages

☐ Coin-op Serial Communication Drops

☐ Coin-op check if alive fails

▲▼

Notify Every 0

Logging Verbosity

Minimum

▼

The admin setup tab allows you to change the current Admin password.
The notification options are to do with Coin-Op notifications and are generally left blank.

Screen Config

Event

Template

Booth Setup

Green Screen

Camera Setup

About

CoinOp


Admin Setup

Screen Config.

Printer Config.

Summary

Plus Features



Screen Configuration

Work with up to four attached screens. Check screen control as enabled, select the screen and then select its mode.

Default Layout

☒ Enabled

Primary

\\DISPLAY1 MASTER Width 1280 height 1024

▼

Mode

Master

▼

☐ Enabled

Secondary

▼

☐ Enabled

Tertiary

▼

☐ Enabled

Quaternary

▼

PB Pro allows multiple external screens to be setup (they will all require a different connection such as HDMI, DVI or VGA) to be hooked up to the PC. You can configure what is displayed on each screen from the Screen Configuration options to suit.

Printer Config.

Event

Template

Booth Setup

Green Screen

Camera Setup

About

CoinOp


Admin Setup

Screen Config.

Printer Config.

Summary

Plus Features



Sponsored by Mitsubishi

We recomend Mitsubishi CP-D70DW printers but other Windows compatible printers should be compatible.

?

Need Help

Set Printer Preferences

Strip Print Paper Size

10x15 (4x6")

Match Pictures to Printer Paper Aspect Ratio

Fit to Frame

Paper Replaced

All printer settings used from PB Pro are controlled from the Printer Config. Page.

If strip printing is used set the Strip Print Paper size to suit.

Clicking the Set Printer Preferences page allows you to set the main settings for the printer paper.

Print

×

Printer

Name: MITSUBISHI CP70D Series(USB) Properties...

Status: Ready

Type: MITSUBISHI CP70D Series(USB)

Where: USB001

Comment: ☐ Print to file

Print range

☒ All

☐ Pages from: to:

☐ Selection

Copies

Number of copies: 1

☐ Collate

OK

Cancel

Click the Properties of the Printer to change the settings specifically for your printer.

Summary Tab

Event

Template

Booth Setup

Green Screen

Camera Setup

About

CoinOp

Admin Setup


Screen Config.


Printer Config.

Summary

Plus Features

Update My Software Status

MITSUBISHI
ELECTRIC
Changes for the Better



Current Event Summary

Date

2018-10-16

Event Name

rfnhdfjggufjfruyur7ruf

Number of Photographs

37

Number of Photographs Taken

34

Number of Prints Total

17

Number of Prints Requested

17

Number of Re-Prints Requested

0

Number of Videos

5

Number of Videos Recorded

5


Memory

98MB

Contact Us

Web Support

PhotoBoothLabs

PBPrinting
Printing For the Photographic Industry

Purchase additional paper.
www.photoboothlabs.com

Custom or pre existing
Skin's for your Booth.
www.pbprinting.co.uk

Note: Some Canon SLR Camera's may require the Canon
EOS Utility 2 to be installed. [Link to EOS Support](#)

Support: info@photoboothsoft.com*

Technical Support - Monday to Friday - 10:00am to 17:00PM

* PB Pro is 10:00 - 17:00 Weekday (Monday - Friday) support only unless specifically purchased. Queries may not be responded to until the next
available weekdays.

This is the opening page that just shows a quick summary of the System.

Manual Version 3.02

26

October 2nd

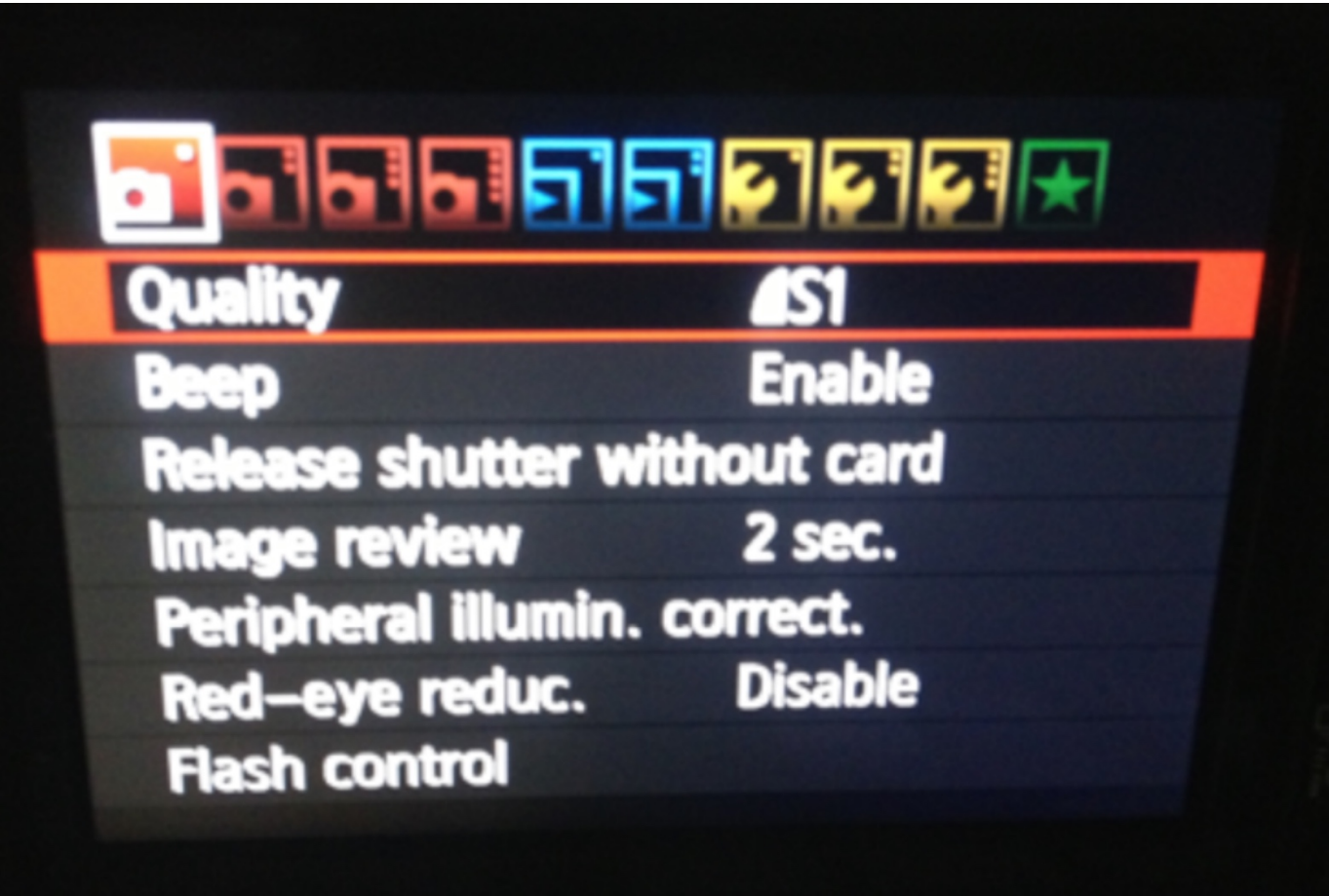
Setting Up the SLR Camera – Canon Range.

The SLR Camera can be setup in numerous ways, however we have found the following settings on the camera to get the best results.

The Resolution

The first thing to do is to change the default resolution taken by your Canon. We actually need to reduce the resolution down to 2592 x 1728 (or as near as possible such as 2256 x 1504 on some of the cameras such as 450D).

To do this simply have your camera ready and disconnect it from any Computer. Next press the 'Menu' button on the back to get the menu options on the LCD screen. The first menu option using the directional dials to the right of the screen selects the Quality Option and press the 'Set' Button to get the options up.



Next use the Left and Right buttons to select S1 with resolution 2256 x 1728 (as shown) then press 'Set' when done.



Setting the Timeout

Whilst still in the menu's press the right button to move across the the First option with a spanner icon. You'll see the first option below it change to 'Auto power off'. When that is highlight press the 'Set' Button.



Now move down to select 'off' in the menu item.



Press the 'Menu' button once to turn off this menu.

Setting Up the Flash

On the front of the Camera to the right of the lens is a small 'flash' button. Pressing this will make the Flash popup meaning it is ready to be used for every picture. If you don't want this just press the Flash back down manually.



Auto Focus / Manual Focus.

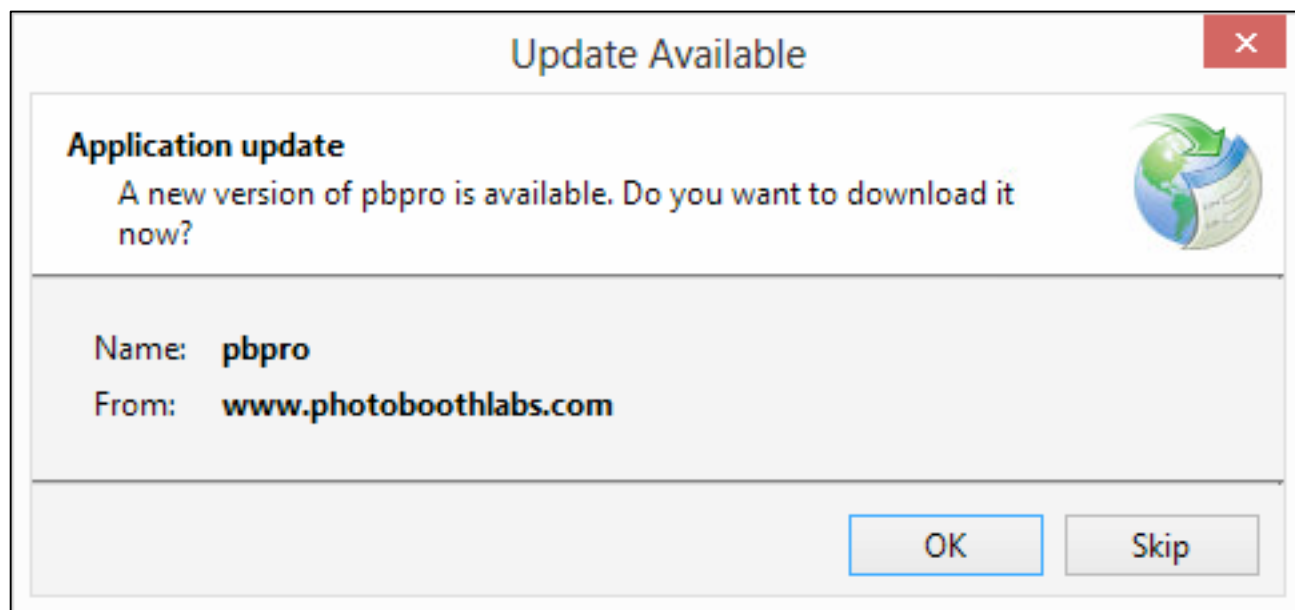
Although Auto Focus is generally a good thing when using a PhotoBooth it causes far too many problems and the extra time taken by the camera to focus on the many objects in a picture can take far to long to take the picture.

As a result you will need to turn the camera to Manual Focus and manually zoom in or out to get the best picture and use the front of the lens to manual focus the camera for your event.

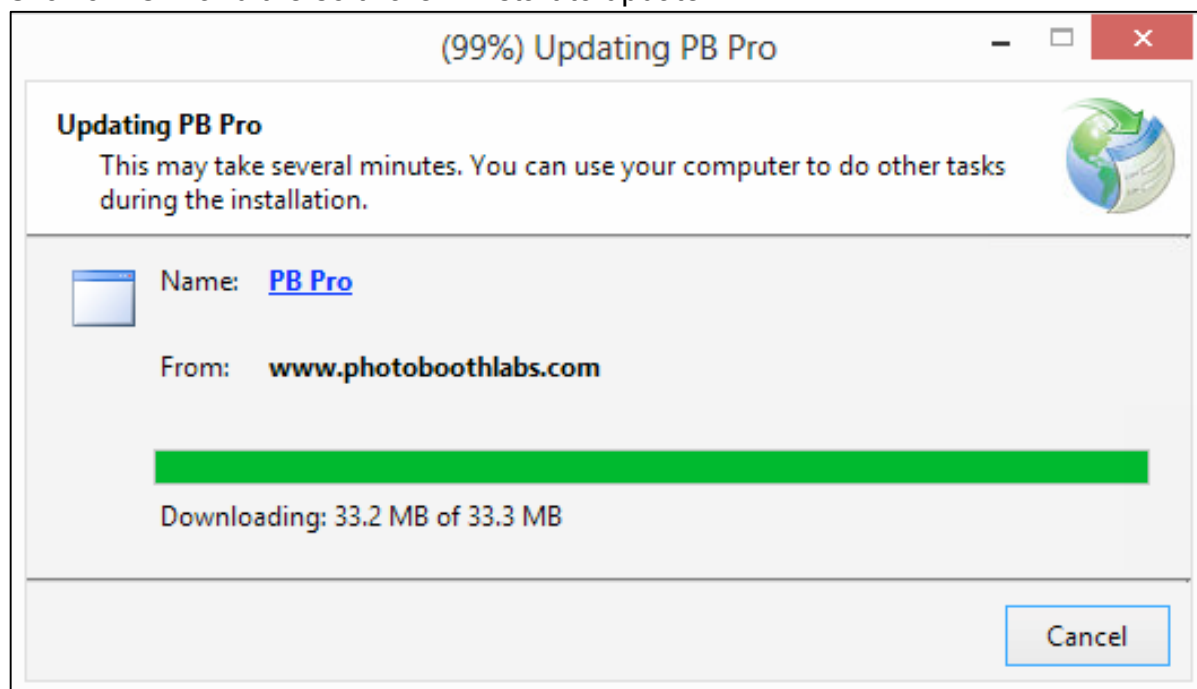


Updating Your Software

When we release an update to the software each time the program runs as long as an Internet connection exists it will let you know that a new version is available.



Click on 'OK' and the software will start to update



It will then ask you to Confirm the software is ok.